



# Variable Air Volume Terminal Units



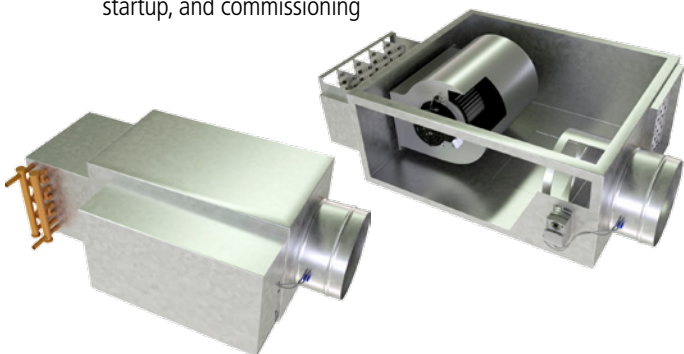
## Create the conditions you want with Daikin VAV solutions

Daikin Applied variable air volume (VAV) terminal units provide zone-level airflow modulation to satisfy the conditioning needs of individual spaces. Customized to each building's requirements, VAV terminal units with Intelligent Systems™ controls help you achieve a higher level of efficiency and comfort than ever before.

### Discover the benefits of modulated airflow

VAV solutions outperform standard constant air volume systems in performance, energy savings, and ease of installation.

- Individual dampers provide precise airflow and temperature control over each zone for maximum comfort
- Pressure reset, night setback, zone isolation, and other features create energy savings
- Preinstalled, preprogrammed controls save time on specifying, startup, and commissioning



## Enhance comfort with quiet efficiency

VAV terminal units enable airflow modulation at the zone level, and provide centralized zoning capabilities for packaged rooftop units. With the multi-zone model, the system can respond to changing space conditions more effectively, and users can specify setpoints for individual zones to accommodate varying occupancy needs.

This arrangement allows for greater control over tenant comfort and lower system-wide energy usage. According to the Environmental Protection Agency, a VAV system can reduce fan horsepower requirements by 40 to 60 percent.

Manufactured with one-piece construction and quiet fan motors to reduce radiated noise, Daikin Applied VAV units work quietly and efficiently to make your space as comfortable as possible.

## Select the right options for your building

Designed for a diversity of applications, Daikin Applied VAV units are available with single-duct, parallel fan, series fan low profile, and more configurations with water or electric heating options.

Daikin VAV units integrate smoothly with new or existing packaged rooftop systems and can improve efficiency and comfort over constant air volume arrangements.

Even if conditions are demanding or complex, a custom-designed cooling and heating solution with Daikin Applied VAV can save energy and provide the conditioning needed for your building.

# Why is VAV a better option?

	Constant air volume (CAV) terminal units	Constant air volume with changeover bypass	Variable air volume (VAV) terminal units
Zone control for precision temperature management	No	Yes	Yes
Preconfigured for easy installation	No	No	Yes
Rooftop unit can moderate fan speed to save energy	No	No	Yes
Meets many government regulations requiring VAV systems	No	No	Yes

## Manage whole-building comfort with Intelligent Systems™

For your VAV application, Daikin Applied offers what others can't: building-wide control with Intelligent Systems. Unit-by-unit, Intelligent Systems measures, analyzes, and optimizes the airflow and temperature of each zone and adjusts system settings to maximize energy savings and comfort.

VAV units with factory-installed with BACnet MS/TP-capable DDC controllers come preprogrammed with Intelligent Systems for faster commissioning and startup.

### Access operations from anywhere with unit-level control

Intelligent Systems delivers remote, pinpoint control over each zone of your building from any connected device. This enables precision temperature management, enhanced efficiency, and ideal indoor conditions.

The intuitive, browser-based interface allows users to adjust settings, monitor equipment, and gauge operating tendencies. Scheduling options allow energy savings during off hours.



### Save energy with smart solutions

Intelligent Systems performs ongoing analysis of space conditions to facilitate efficient air-handler changeover between heating and cooling and adjust air damper positioning within each box.

When conditions allow, the pressure reset algorithm adjusts duct static pressure setpoints to reduce air handler fan speed, saving energy.

## Customized design

Daikin Applied VAV units come with a number of available factory-installed options, including:

#### Heating choices

- Water heat
- SCR electric heat
- Staged electric heat

#### Controls options

- DDC with Intelligent Systems and optional CO<sub>2</sub> and relative humidity sensor
- Factory-installed third-party controls
- No installed controls

#### Liner construction

- Dual-density fiberglass
- Closed cell
- Double wall

#### Quick-release access doors

#### Fused disconnects

#### ECM motors

For more information about our complete line of Parts and Service, visit [www.DaikinApplied.com](http://www.DaikinApplied.com) to find a service office near you.