

## Sales and Engineering Data

**ED 19108**

Group: **Controls**

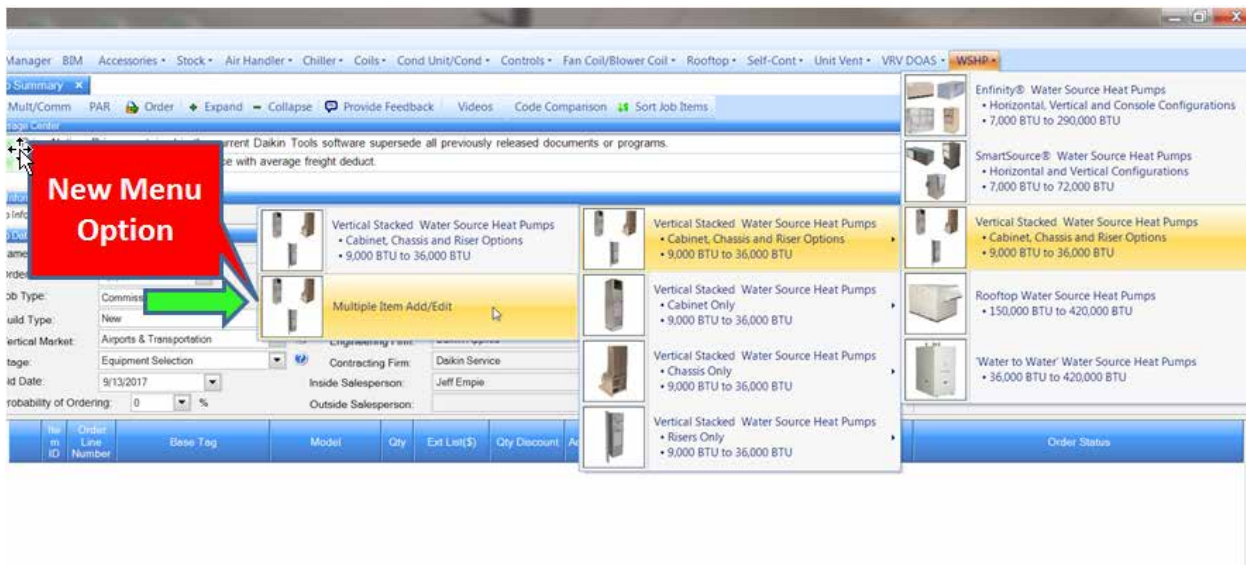
Part Number: **ED 19108**

Date: **February 2018**

## New Selection Functionality Details

### Vertical Stacked WSHP Multiple Item Add/Edit

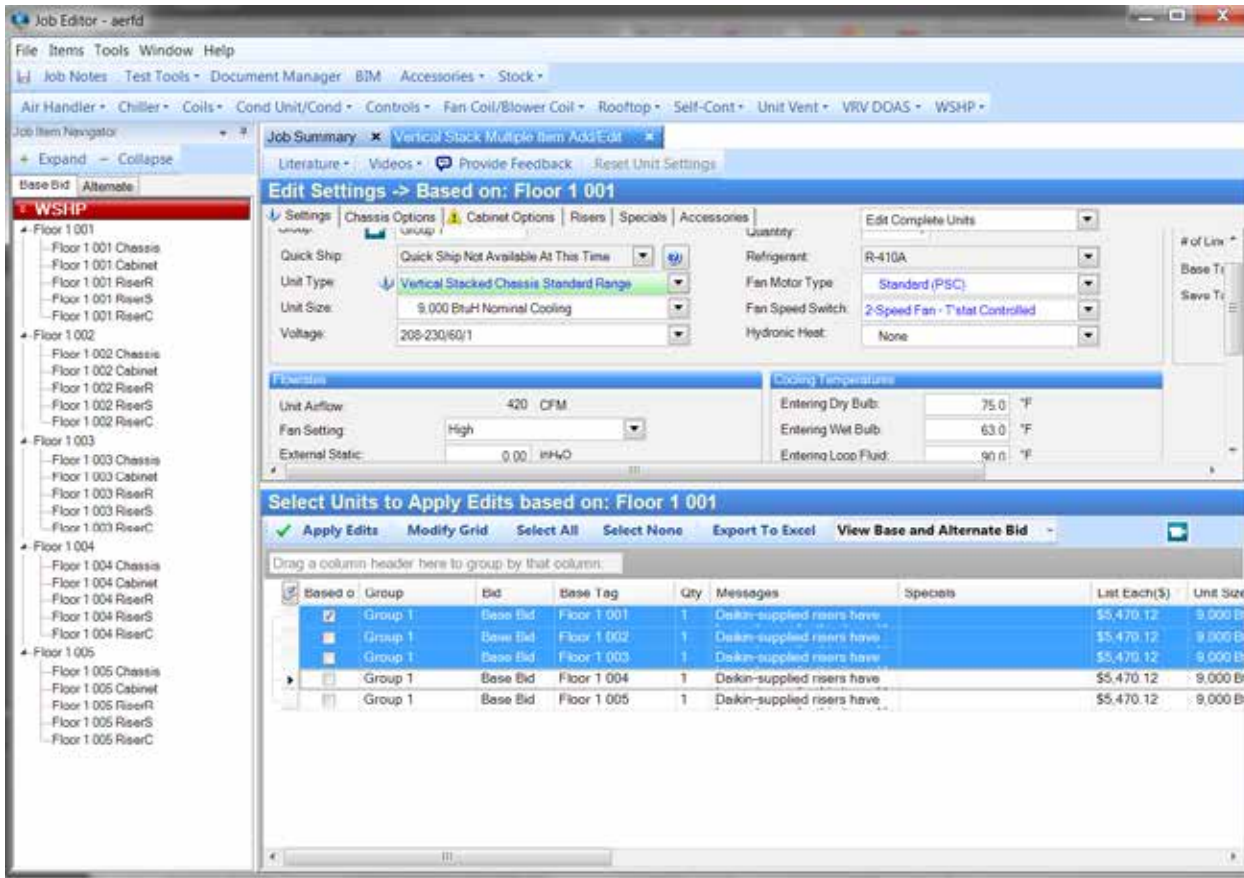
Select the New Vertical Stacked 'Multiple Item Add/Edit' menu option from the WSHP menu, under Vertical Stacked WSHP's:



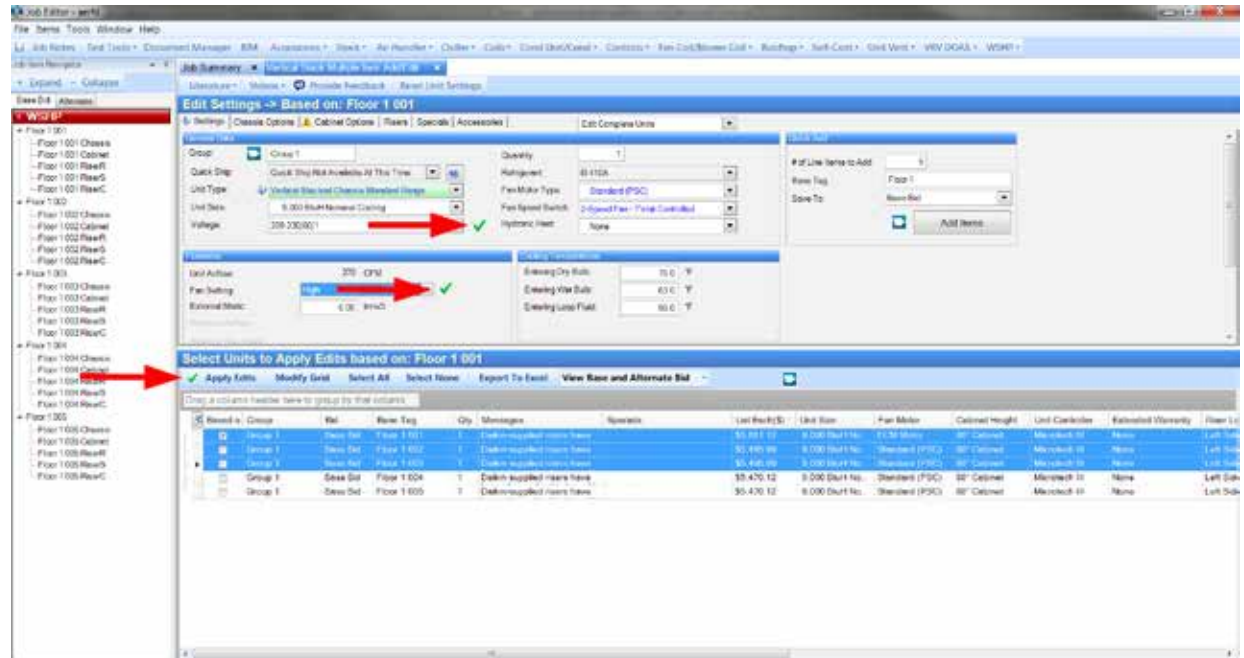
**Note:** The Multiple Item Add/Edit application cannot be launched if there is already a Vertical Stacked WSHP unit that is being edited. Conversely, individual line items cannot be opened when the mass edit application is open.

If the job has any existing line items, the Multiple Item Add/Edit application will load these line items into the 'Select Units' grid automatically. In order to edit multiple line items, select multiple line items in the Select Units grid and make configuration selections in the 'Edit Unit Settings' tabs.

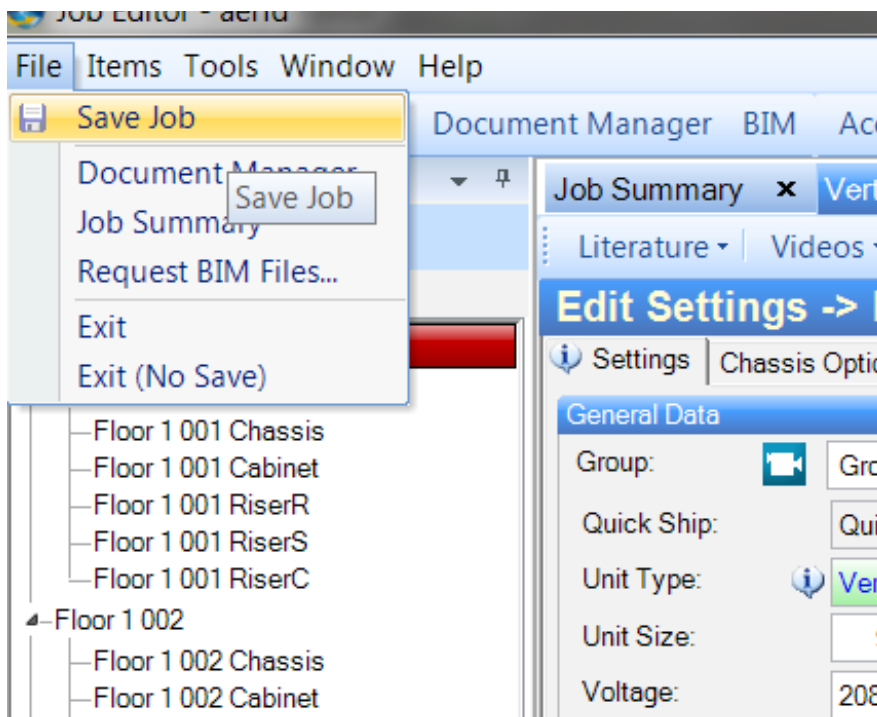
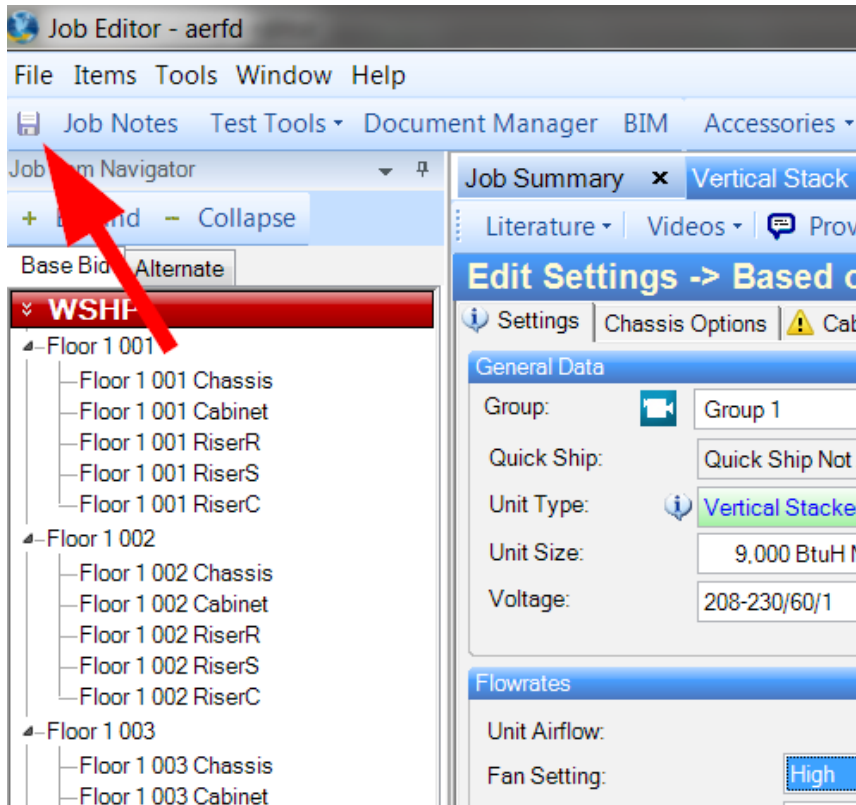
- Select line items by clicking on the row. Note: Clicking on 'Based on', 'Base Tag' or the 'Rate' button does NOT select the row for applying edits.
- Selected line items are highlighted in blue.
- Available Unit Settings are based on the first line items selected in the Select Units grid
- Select multiple units through standard Ctrl-Click or Shift-Click actions common to spreadsheets. In addition, click-drag in the grid will select multiple line items.
- **Note:** The Base Tag field in the Select Units grid is editable directly in the grid, so it cannot be clicked on in order to 'select' that line items for editing.



Configuration edits that will be applied are indicated with a green checkmark after they have been edited.




Once the 'Apply Edits' button has been clicked, all edited options will attempt to be applied to the selected units. If any edit options are invalid for one or more of the selected line items, the option will not be updated. Once all edits are complete, you will need to save the job configuration from the File menu to finalize the edits. Alternatively, click the job 'Save' button.

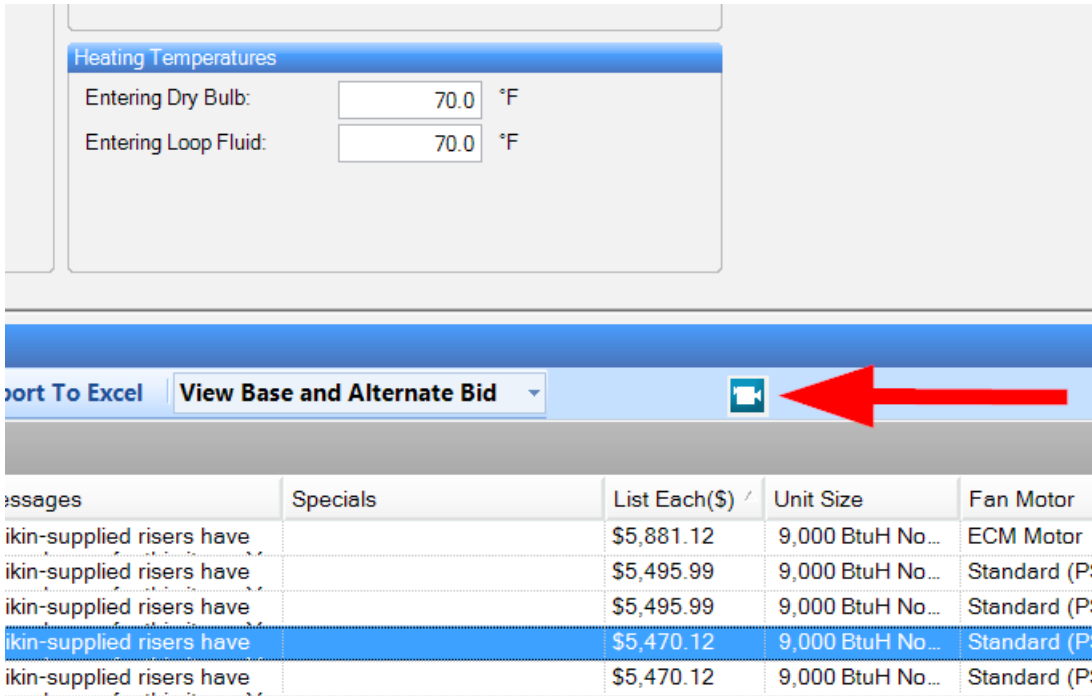


### Accessories

Accessories can be added or removed to multiple line items at once with the mass edit tool. From the 'Accessories' tab, a list of Available Accessories will be shown, representing the Accessories available for the 'Based on' line item that has been selected. Move desired Accessories to the 'Selected Accessories' panel just like the main fan coil app and click 'Apply Edits' to add the selected accessory/accessories to the selected line item(s). Similarly, accessories can be removed from selected units in the same fashion.

### Additional Guidance & Training

To view instruction videos providing further information and demonstrations, click the  buttons in DST.



The screenshot shows a software interface with a 'Heating Temperatures' panel at the top. Below it is a toolbar with buttons for 'Export To Excel' and 'View Base and Alternate Bid'. A red arrow points to a video icon in the toolbar. Below the toolbar is a table with columns: 'Messages', 'Specials', 'List Each(\$)', 'Unit Size', and 'Fan Motor'. The table contains five rows of data, with the third row highlighted in blue.

| Messages                  | Specials | List Each(\$) | Unit Size        | Fan Motor    |
|---------------------------|----------|---------------|------------------|--------------|
| ikin-supplied risers have |          | \$5,881.12    | 9,000 BtuH No... | ECM Motor    |
| ikin-supplied risers have |          | \$5,495.99    | 9,000 BtuH No... | Standard (P) |
| ikin-supplied risers have |          | \$5,495.99    | 9,000 BtuH No... | Standard (P) |
| ikin-supplied risers have |          | \$5,470.12    | 9,000 BtuH No... | Standard (P) |
| ikin-supplied risers have |          | \$5,470.12    | 9,000 BtuH No... | Standard (P) |