

## Installation and Maintenance Manual

## IM 869-3

Group: **Applied Air Systems**

Part Number: **IM869-3**

Date: **July 2023**

# Maverick® I, Maverick® II, Rebel®, Rooftop and Self Contained Remote Wall-mounted Sensor



Part Number 113117701



Part Number 113117801

### Overview

There are two types of sensors:

- Analog Sensor with timed override button
- Analog Sensor with timed override button and set-point adjustment

### Hardware Provided

- Remote wall-mounted temperature sensor
- Black insulator sheet
- 1/16" hex key wrench
- Two Allen screws
- Two wall mounting screws
- Friction-tight knob (analog sensor with set-point adjustment only)

## Mounting Instructions

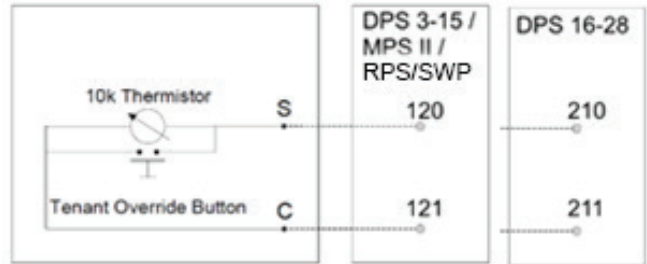
1. Remove the friction-tight knob from the wall sensor (only on Analog sensor with set-point adjust).
2. Remove the cover using the 1/16" hex key wrench to drive in each of the two Allen screws.
3. Select an appropriate location for mounting the sensor. Mount approximately five feet above the floor on an interior wall. Avoid direct sunlight, heat-producing appliances, and vents or ducts.
4. Bring appropriate number of wires from Terminal Block 2 of the unit through the insulator sheet and then through the hole in the center of wall sensor.
  - a. Two wires for the analog sensor with timed override
  - b. Three wires for analog sensor with set-point adjustment.
5. Connect wire terminals as shown in each figure represented by their respective sensors.
6. Mount the sensor and insulator sheet using the hardware provided

The analog zone/space sensor consists of a 10K ohm type II thermistor with a tenant override button and optional setpoint adjustment knob (depending on selected sensor). Wire terminal numbering for Rebel sizes 3-15, all sizes Maverick II, Self Contained, and Rooftop (e.g. RPS) are the same. Terminal numbers for Rebel sizes 16-28 tons are different from the other rooftop units using MicroTech® unit controllers. Corresponding wiring diagrams are shown in [Figure 1](#) and [Figure 2](#) for Rebel, Maverick II, Self Contained, and Rooftop. On Maverick I units the sensor wires are directly wired back to the DDC controller as shown in [Figure 3](#) and [Figure 4](#).

**Figure 1: Wiring Diagram – Analog Sensor with Tenant Override for Maverick II, Rebel, Self Contained, and Rooftop**



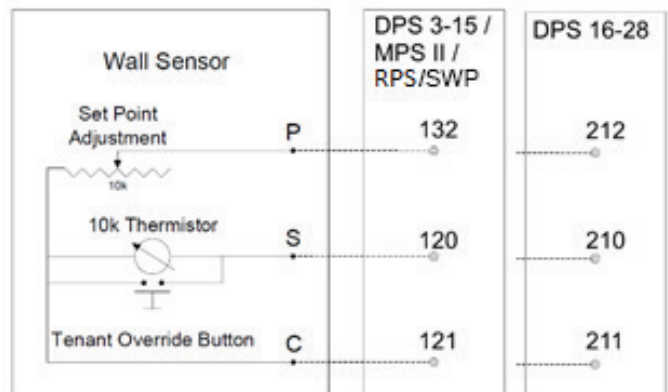
**113117701 Sensor Wiring Diagram**



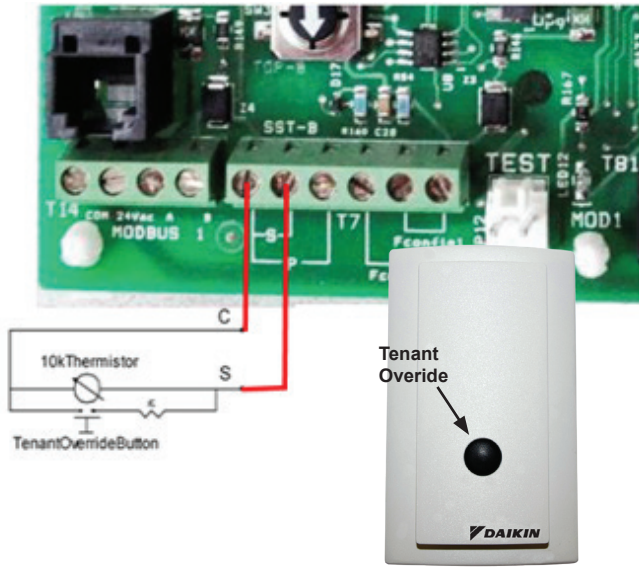
**Figure 2: Wiring Diagram – Analog Sensor with Tenant Override and Set Point Adjustment for Maverick II, Rebel, Self Contained, and Rooftop**



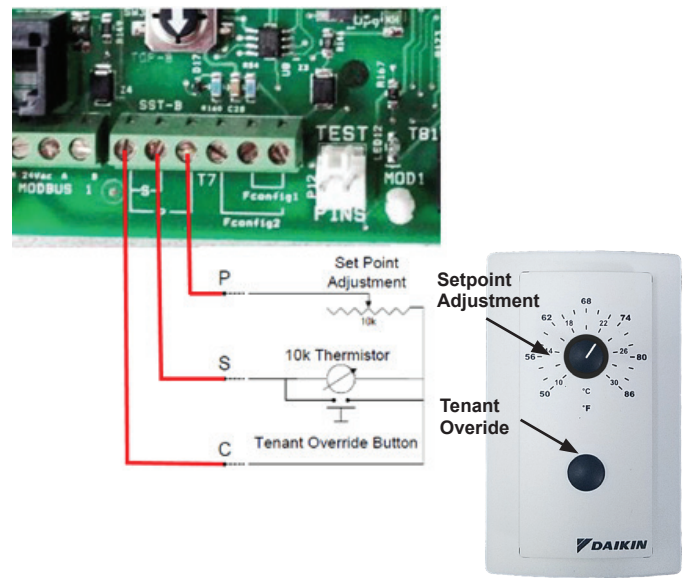
**113117801 Sensor Wiring Diagram**



**Figure 3: Wiring Diagram – Analog Sensor with Tenant Override for Maverick I**



**Figure 4: Wiring Diagram – Analog Sensor with Tenant Override and Setpoint Adjustment for Maverick I**





### ***Daikin Applied Training and Development***

Now that you have made an investment in modern, efficient Daikin Applied equipment, its care should be a high priority. For training information on all Daikin Applied HVAC products, please visit us at [www.DaikinApplied.com](http://www.DaikinApplied.com) and click on Training, or call 540-248-9646 and ask for the Training Department.

### ***Warranty***

All Daikin Applied equipment is sold pursuant to its standard terms and conditions of sale, including Limited Product Warranty. Consult your local Daikin Applied Representative for warranty details. To find your local Daikin Applied Representative, go to [www.DaikinApplied.com](http://www.DaikinApplied.com).

### ***Aftermarket Services***

To find your local parts office, visit [www.DaikinApplied.com](http://www.DaikinApplied.com) or call 800-37PARTS (800-377-2787). To find your local service office, visit [www.DaikinApplied.com](http://www.DaikinApplied.com) or call 800-432-1342.

This document contains the most current product information as of this printing. For the most up-to-date product information, please go to [www.DaikinApplied.com](http://www.DaikinApplied.com).

Products manufactured in an ISO Certified Facility.