

Installation and Maintenance Manual

IM 1305-1

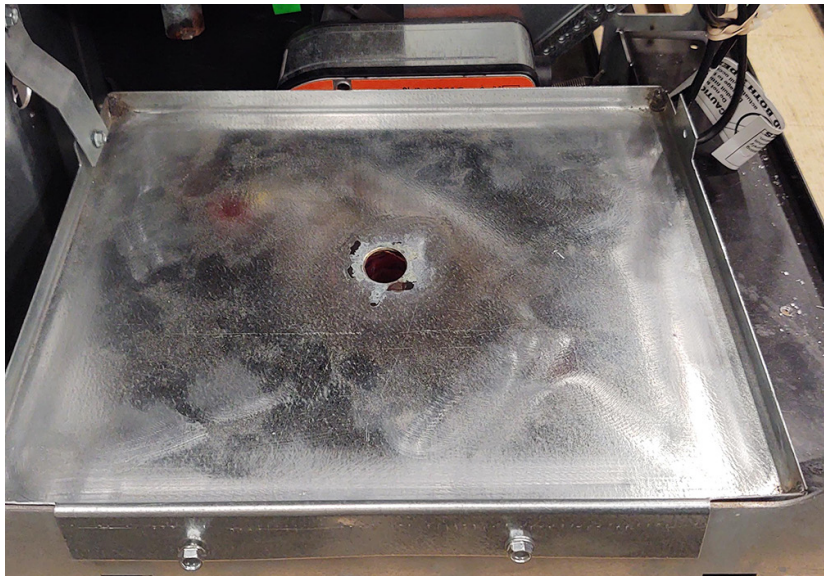
Group: ATS

Part Number: **IM1305-1**

Date: **August 2024**

Auxiliary Drain Pan Kit for Vertical Floor Mounted Unit Ventilators

Models UAVS, UAVV, UAVB and UAVR



Introduction

The Auxiliary Drain Pan Kit is used to capture and dispose of condensate, derived from piping and valve assemblies that may be cold enough to have condensate form on them. The kit can be installed on either the left or right hand end of a floor mounted UAV.

Safety Precautions

⚠ WARNING

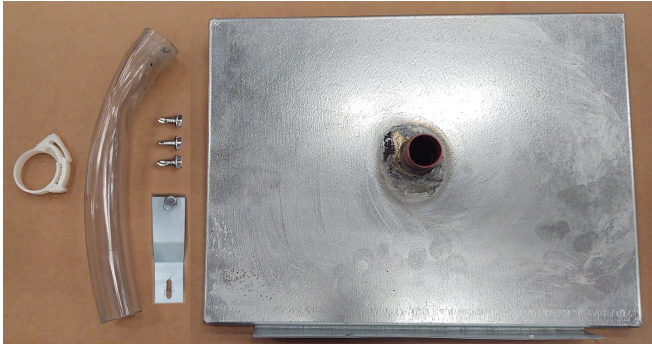
The installer must determine and follow all applicable local and national codes and regulations. This equipment presents hazards of electricity, rotating parts, sharp edges, heat and weight. Failure to read and follow these instructions can result in property damage, severe personal injury or death. This equipment must be installed by experienced, trained personnel only.

⚠ CAUTION

Sharp edges can cause personal injury. Avoid contact with them.

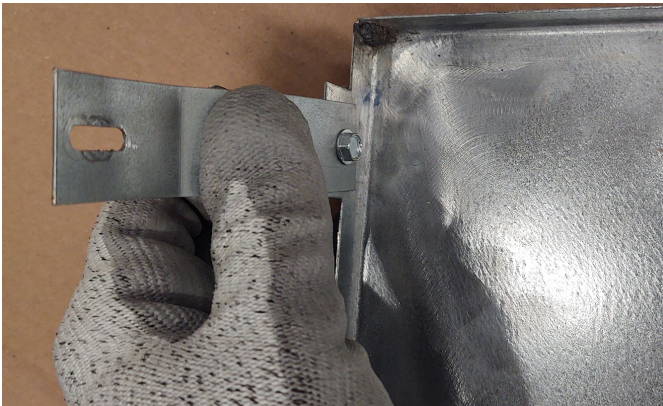
1. Remove contents from box.
Kit includes drain pan with three 1/4" self-tapping, hex head screws, mounting strap with 1/4" self-tapping, hex head screw, and drain hose with clamp.

Figure 1: Kit parts



2. Attach mounting strap to the tab on the drain pan using the provided screw, through the non-slotted hole. Left hand mounting shown. Right hand similar.

Figure 2: Attach strap to pan through non-slotted hole



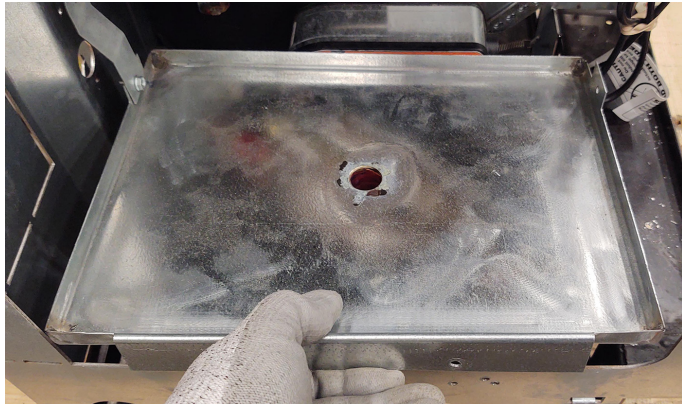
3. Connect the PVC drain hose to the drain stub with the clamp provided.

Figure 3: Connect PVC drain hose and clamp



4. Align and install the pan. Locate the lip of the pan over the UV sheet metal frame as shown in [Figure 4](#).

Figure 4: Align pan



5. Attach the pan using two of the provided 1/4" hex head screws, [Figure 5](#).

Figure 5: Secure pan to UV with provided screws



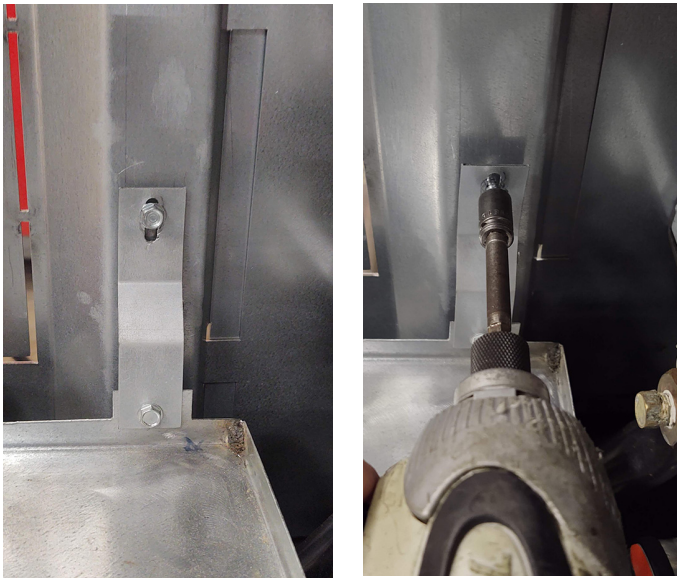
- Fasten the rear mounting strap to the rear of the UV using the provided screw (Do not completely tighten). Center the screw in the slot to allow for adjustment. See [Figure 7](#)

Figure 6: Attach strap to rear of unit (do not tighten)



- Adjust the pan in the level position and tighten the strap screw.

Figure 7: Adjust pan level and tighten screw to secure strap



- Route condensate drain hose to a field provided sanitary drain.

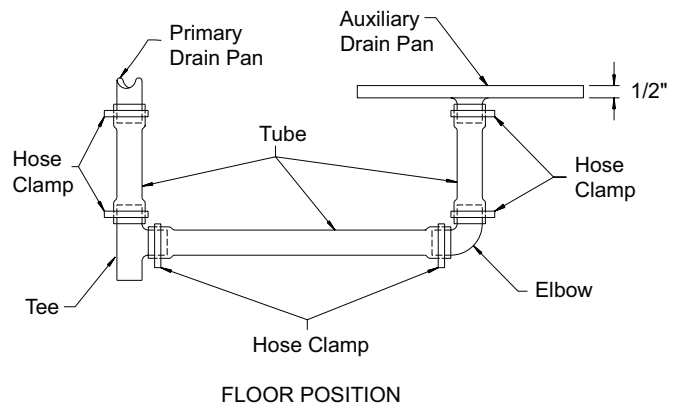
NOTICE

Trap in accordance with local codes. Confirm condensate line is free of kinks and obstruction.

Figure 8: Installed pan



Figure 9: Condensate Drain Piping Method Example



Refer to [Figure 9](#) for an example of condensate drain piping.



Daikin Applied Training and Development

Now that you have made an investment in modern, efficient Daikin Applied equipment, its care should be a high priority. For training information on all Daikin Applied HVAC products, please visit us at www.DaikinApplied.com and click on Training, or call 540-248-9646 and ask for the Training Department.

Warranty

All Daikin Applied equipment is sold pursuant to its standard terms and conditions of sale, including Limited Product Warranty. Consult your local Daikin Applied representative for warranty details. Refer to Form 933-430285Y. To find your local Daikin Applied representative, go to www.DaikinApplied.com.

Aftermarket Services

To find your local parts office, visit www.DaikinApplied.com or call 800-37PARTS (800-377-2787).

To find your local service office, visit www.DaikinApplied.com or call 800-432-1342.

This document contains the most current product information as of this printing. For the most up-to-date product information, please go to www.DaikinApplied.com.

Products manufactured in an ISO Certified Facility.