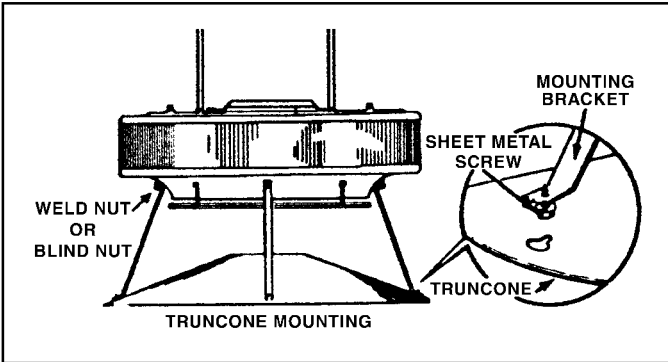


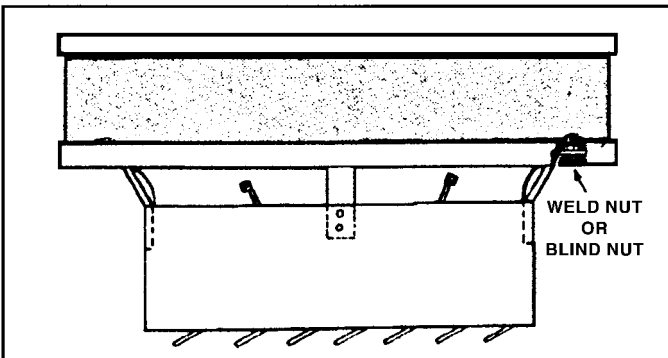
Vertical Air Deflectors

Figure 1
Truncone Installation
 Models UDH & UDX 42-333



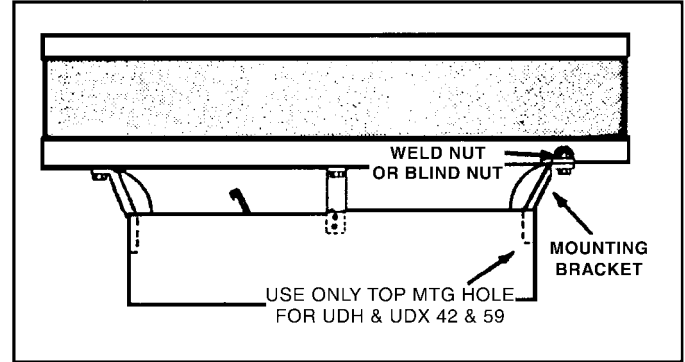
Start sheet metal screws into 1/8" hole in mounting bracket. Fasten brackets to bottom cover of unit heater with machine screws through the mounting brackets into the blind nuts.

Figure 2
Louver Installation
 Models UDH & UDX 42-333



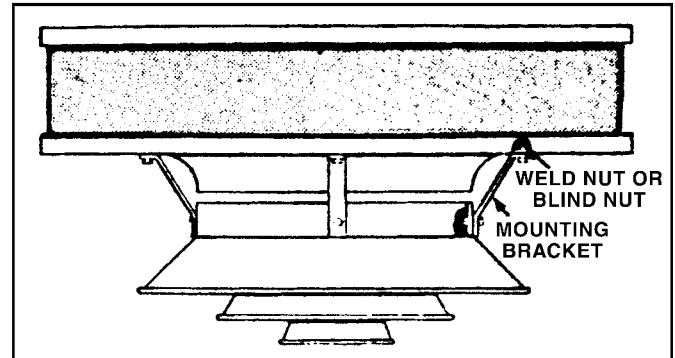
Fasten louver mounting brackets to louver with screws. Fasten louver assembly to bottom cover of unit heater with machine screws. Tighten all screws securely.

Figure 3
Cone Jet Installation
 Models UDH & UDX 42-333



Fasten cone jet mounting bracket to cone jet with screws. Fasten cone jet to bottom cover with machine screws.

Figure 4
3 & 4 Cone Anemostat Installation
 Models UDH & UDX 42-333



Fasten anemostat mounting bracket to anemostat with the screws & nuts. Fasten to unit. It may be necessary to remove the outlet fan guard.

NOTE: Some vertical unit heaters will not have weld nuts in the bottom cover. In these cases, insert the blind nuts included in the kit into the holes in the bottom cover from the outside. The air deflector is then mounted to the unit by tightening machine screws through the mounting brackets into the blind nuts.

