

Legacy Console Water Source Heat Pump – Manual or Motorized Outside Air Damper Assembly

Manual and Motorized Damper Installation

The manual and motorized outside air dampers are shipped completely assembled with the exception of the operating arm on the manual damper, which has to be mounted to the assembly.

Manual Damper Parts List: (Figure 1)

- Damper box and door.
- Three-position adjustment rod (manual damper only)
- One plastic hinge pin to attach adjustment arm to the door (manual damper only).
- 2-3/16" x 1/4" sheet metal screws.

1. Attaching Adjustment Arm (manual damper only)
 - Slide the damper adjustment arm (3) through the slot in the damper box. Push the plastic hinge pin (4) provided through the hole in the end of the rod and the hole in the tab attached to the door.
2. Installing the Damper Assembly:
 - a. Before putting the console unit in place, locate the knockout in the back panel of the subbase.
 - b. Remove the knockout and install gasket material as shown in Figure 2 on page 2, to prevent infiltration of ambient conditions.

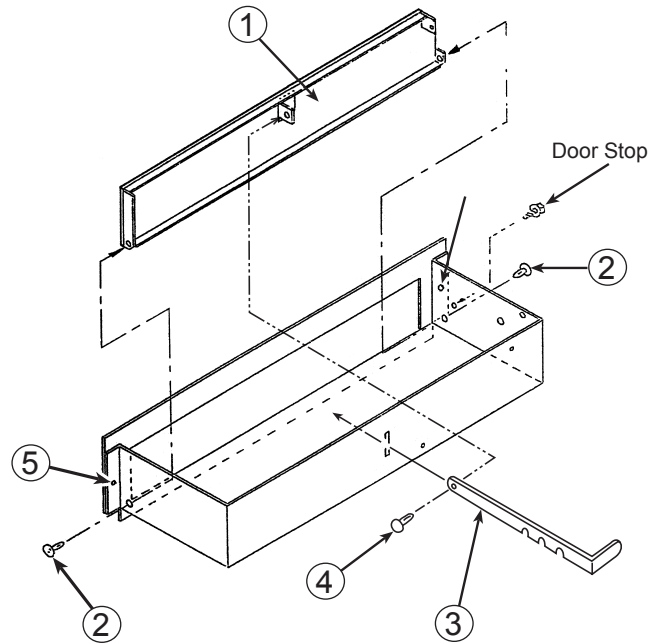
CAUTION

To prevent infiltration of ambient conditions, it is the responsibility of the contractor to assure that factory installed gasketing matches up with the wall opening, or that additional material is used to assure a positive seal.

Cold Weather Operation: Console water source heat pumps may experience erratic operation during cold ambient conditions with the outside air damper in the open position. Refer to the "Operating Limits" in the unit catalog 1140-x.

- c. Insert the damper assembly from the inside of the subbase, and using the (2) screws provided, line the holes up in the damper with the predrilled holes in the back panel and from the back of the subbase secure the damper assembly with the provided screws.
- b. Remove the unit cooling chassis and position the subbase and cabinet wrap in place against the building wall structure.

Figure 1: Manual Outside Air Damper Only



- ① Damper doors and seals
- ② Damper door hinge pins (2)
- ③ Damper adjustment arm
- ④ Damper adjustment arm hinge pin (1)
- ⑤ Damper box mounting holes (2)

3. Placing the Unit Against the Wall:

With the cabinet and subbase in position, line up the damper with the hole in the wall.

Note: Make sure no air leakage takes place after lining up of both openings.

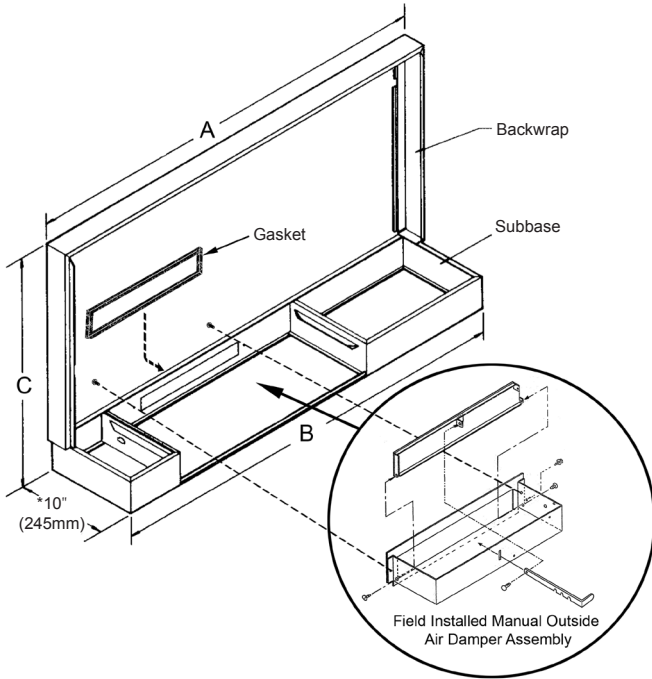
4. Push the subbase cabinet to the wall.

Note: Check the unit IM 447-x for unit installation to the wall.

If the manual damper was installed, work the damper arm opened and closed, checking for free movement of the damper door. Unit installation and start-up can now proceed according to the installation manual shipped with the heat pump chassis.

If the motorized damper was installed, see page 3 for wiring details.

Figure 2: Rear inlet - typical manual damper installation



Motorized Damper Installation

The motorized damper is shipped completely assembled. Follow the same installation instructions used to install the manual damper, to install the motorized damper assembly.

Figure 3: Rear inlet - typical motorized damper installation

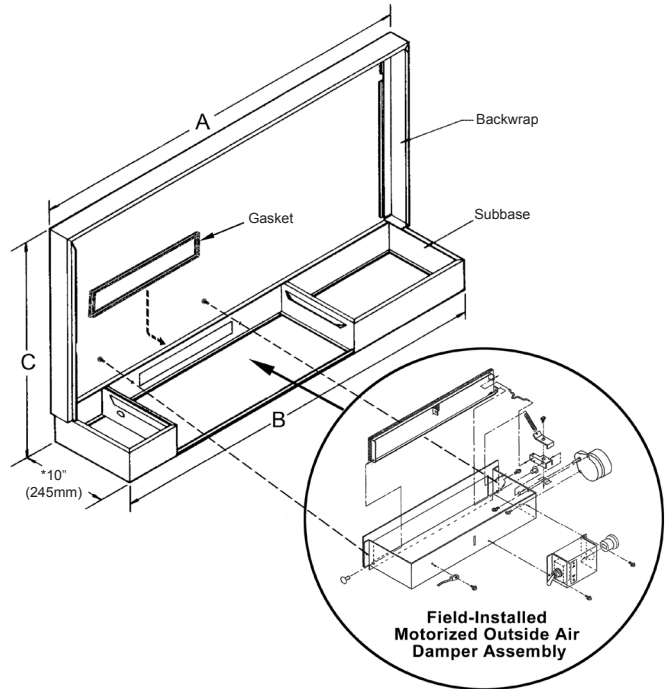


Table 1: Dimensions, in inches (mm)

Unit Type	Unit Size	A	B	C
Standard Height	009-012	46 (1168)	45 (1143)	25 (635)
	015-019	54 (1372)	53 (1346)	25 (635)

Note: * Total unit is 10-3/4" deep. The cabinet extends beyond the subbase 1/4" (6mm) in the back and 1/2" (14mm) in the front.

Motorized Outside Air Damper Wiring

Figure 4: Right-hand unit installation detail

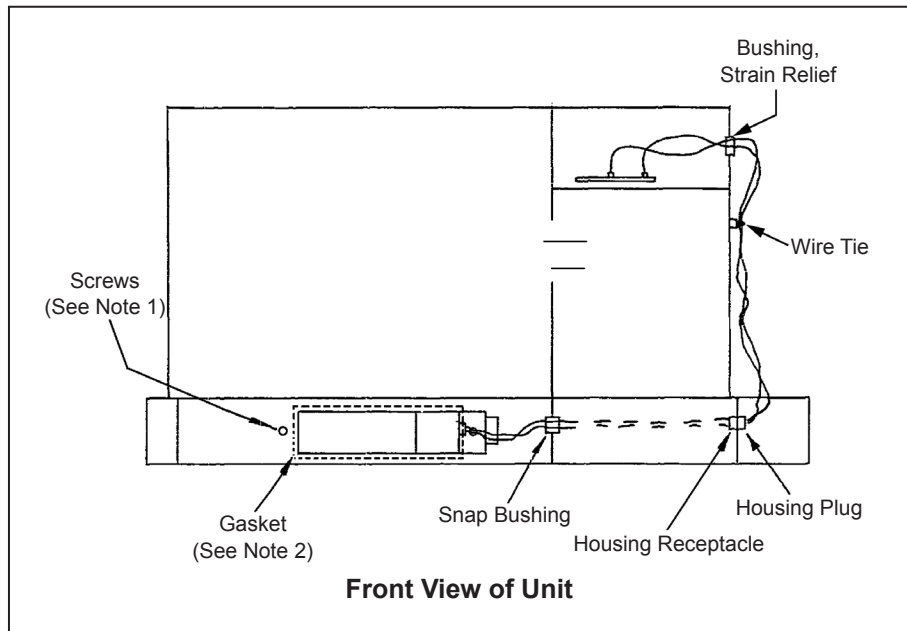


Figure 5: Left-hand unit installation detail

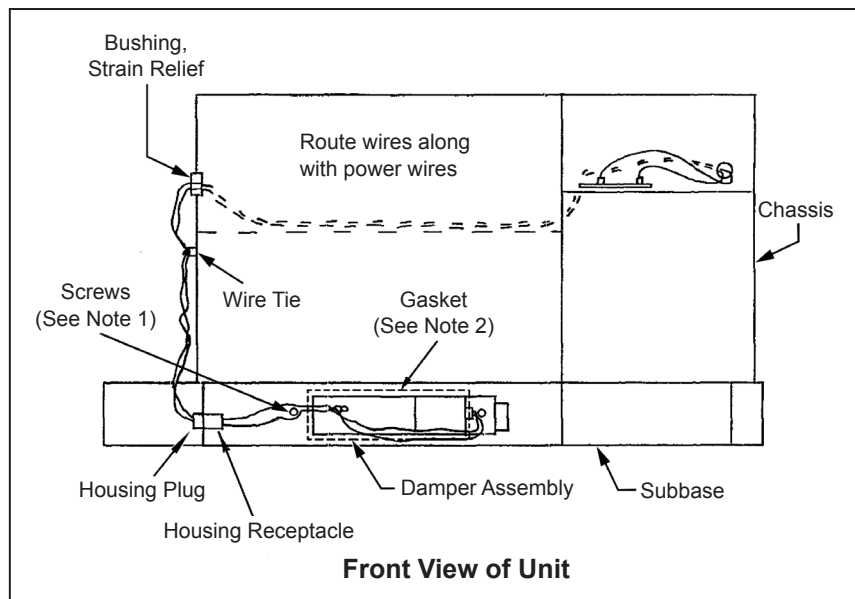
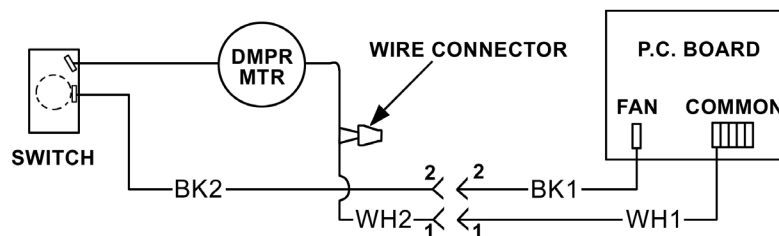


Figure 6: Mark IV Motorized Damper typical wiring diagram



Daikin Training and Development

Now that you have made an investment in modern, efficient Daikin equipment, its care should be a high priority. For training information on all Daikin HVAC products, please visit us at www.DaikinAP.com and click on training, or call 540-248-9646 and ask for the Training Department.

Warranty

All Daikin equipment is sold pursuant to its standard terms and conditions of sale, including Limited Product Warranty. Consult your local Daikin Representative for warranty details. Refer to Form 933-430285Y. To find your local Daikin Representative, go to www.DaikinAP.com.

Aftermarket Services

To find your local parts office, visit www.DaikinAP.com or call 800-37PARTS (800-377-2787). To find your local service office, visit www.DaikinAP.com or call 800-432-1342.

This document contains the most current product information as of this printing. For the most up-to-date product information, please go to www.DaikinAP.com.

Products manufactured in an ISO Certified Facility.

